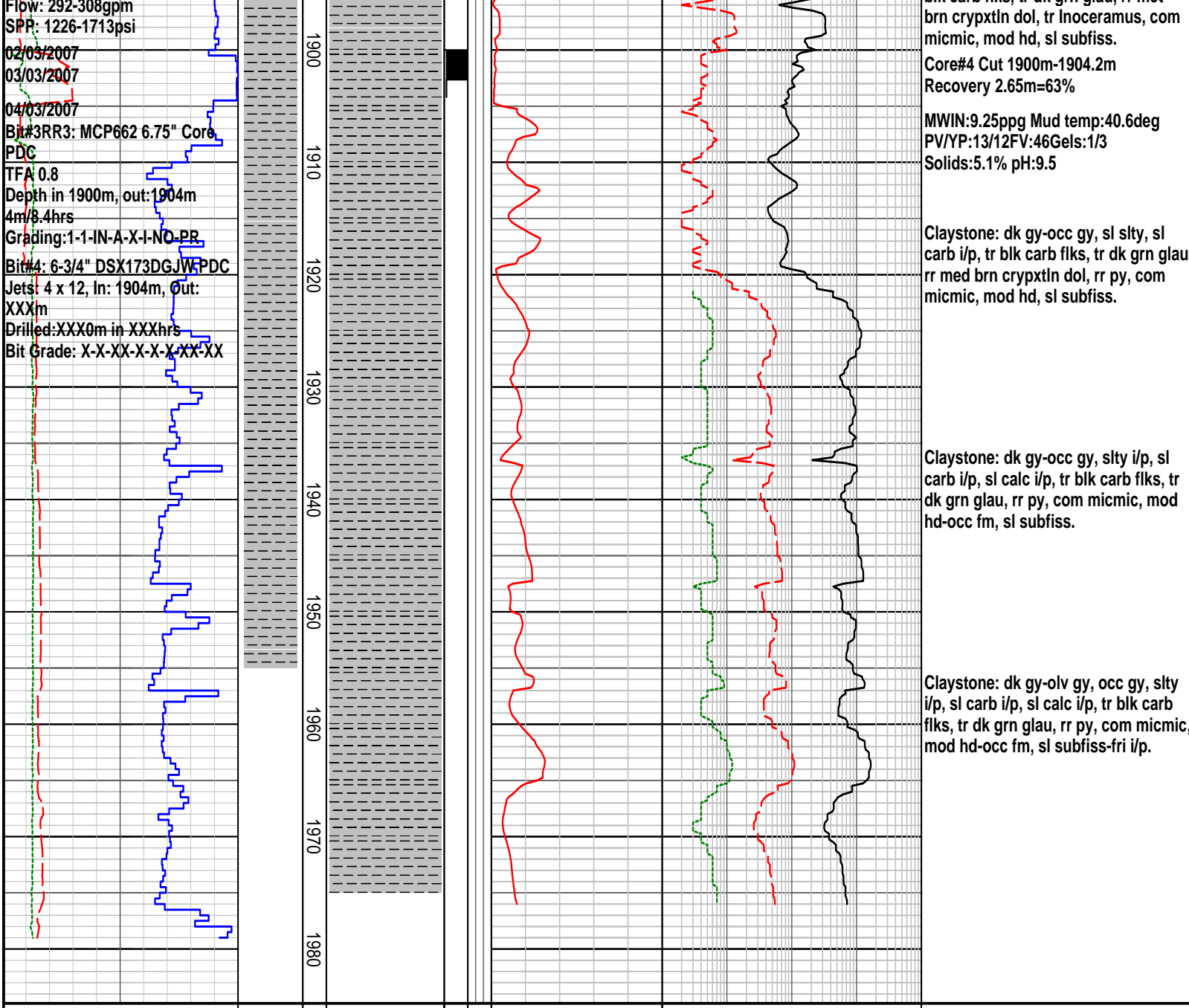


FORMATION EVALUATION LOG

RATE OF PENETRATION ROP (0-100m/hr) 100 90 80 70 60 50 40 30 20 10 Backup ROP (100-200m/hr) 200 190 180 170 160 150 140 130 120 110 WOB (klb) 5 10 15 20 25 30 35 40 45 50 TORQUE AVG 5 10 15 20 25 30 35 40 45 50	LITHOLOGY INTERPRETED LITHOLOGY	MD meters	LITHOLOGY	CORE	OIL SHOWS	TOTAL GAS 0.1 0.2 0.3 0.4 0.5 %	CHROMATOGRAPH				REMARKS
							1	Methane ppm	10000	1	
							1	Ethane ppm	10000	1	
							1	Propane ppm	10000	1	
							1	iso-Butane ppm	10000	1	
							1	n-Butane ppm	10000	1	
							1	iso-Pentane ppm	10000	1	
								n-Pentane ppm			
							10	100	1000	10000	
WOB: 8-11klbs RPM: 89-120 Flow: 248-308gpm SPP: 959-1605psi		00									Claystone: dk gy, sl slty, mod carb, tr blk carb flks, tr dk gn glau, tr med brn crypctl dol, tr Inoceramus, rr diss py com micmic, mod hd, sl subfiss.
		1810									Survey @ 1808m = 2.00 deg incl
		1820									Claystone: dk gy, sl slty, mod carb, tr blk carb flks, tr dk gn glau, rr med brn crypctl dol, tr rr Inoceramus, rr diss py, com micmic, mod hd, sl subfiss.
		1830									Claystone: dk gy, sl slty, mod carb, tr blk carb flks, tr dk grn glau, rr med brn crypctl dol, tr Inoceramus, rr diss py, com micmic, mod hd, sl subfiss.
		1840									Claystone: dk gy, sl slty, mod carb, tr blk carb flks, com-abnt dk grn glau, rr med brn crypctl dol, com micmic, mod hd, sl subfiss.
WOB: 6-11klbs RPM: 80-120 Flow: 300-315gpm SPP: 1210-1690psi		1850									Claystone: dk gy, sl slty, mod carb, tr blk carb flks, tr dk grn glau, rr med brn crypctl dol, com micmic, mod hd, sl subfiss.
		1860									Claystone: dk gy, sl slty, mod carb, tr blk carb flks, tr dk grn glau, rr med brn crypctl dol, com micmic, mod hd, sl subfiss.
		1870									MWIN:9.15ppg Mud temp:47.1deg PV/YP:15/26FV:55Gels:5/5 Solids:5.1% pH:10.0
		1880									Survey @ 1896m = 2.00 deg incl
01/03/2007 WOB: 3-8klbs RPM: 89-121		1890									Claystone: dk gy, sl slty, mod carb, tr blk carb flks, tr dk grn glau, rr med



FORMATION EVALUATION LOG

RATE OF PENETRATION		LITHOLOGY	MD meters 1:500	LITHOLOGY	CORE	OIL SHOWS	TOTAL GAS	CHROMATOGRAPH				REMARKS
ROP (0-100m/hr)	Backup ROP (100-200m/hr)							1	Methane ppm	10000		
100 90 80 70 60 50 40 30 20 10	200 190 180 170 160 150 140 130 120 110	INTERPRETED LITHOLOGY					TOTAL GAS 0.1 0.2 0.3 0.4 0.5 %	1	Ethane ppm	10000		
								1	Propane ppm	10000		
								1	iso-Butane ppm	10000		
								1	n-Butane ppm	10000		
								1	iso-Pentane ppm	10000		
									n-Pentane ppm			
								10	100	1000		10000